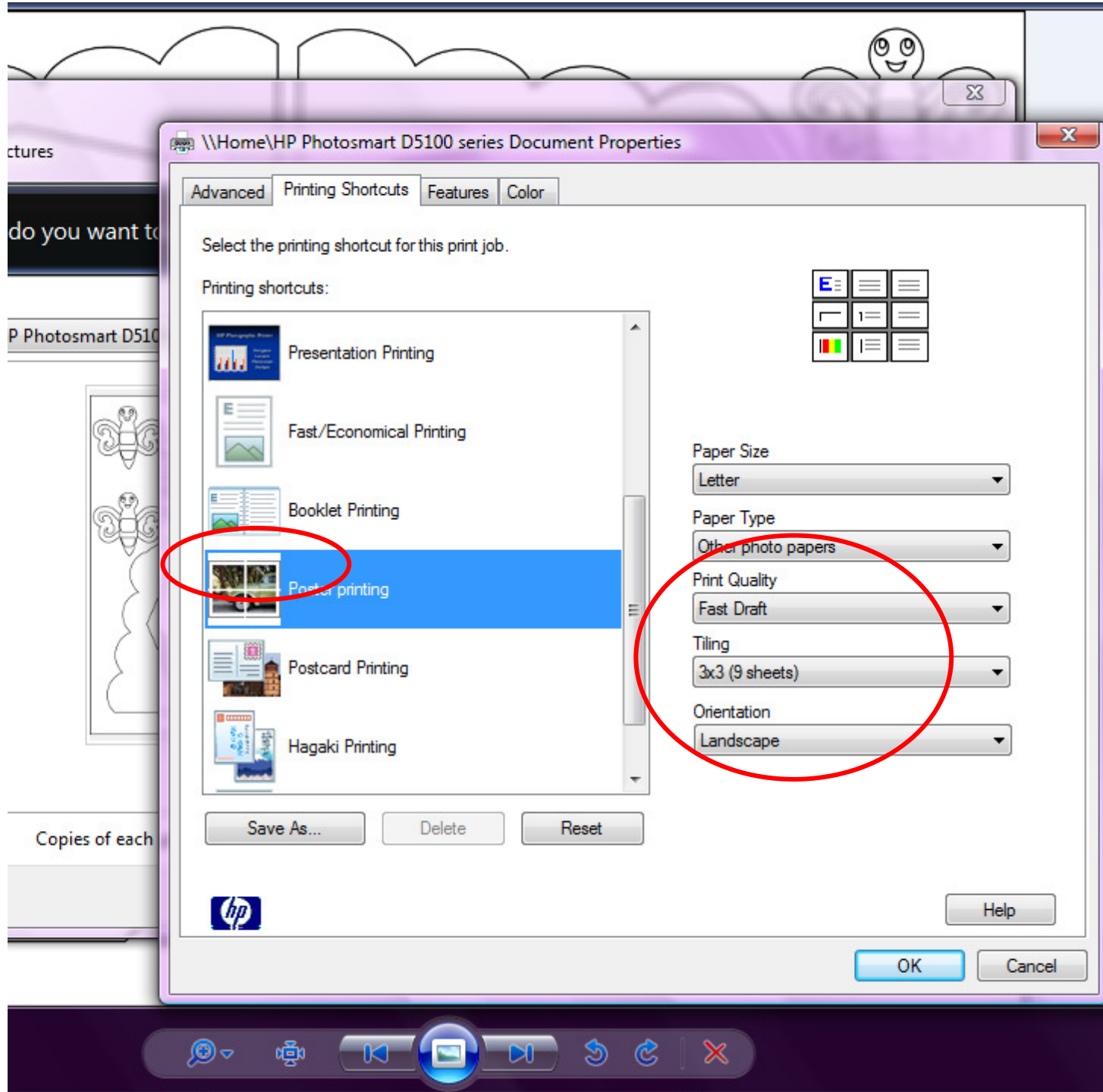


Open the template that you want to enlarge.

Ensure FIT PICTURE TO FRAME is NOT ticked.

Click on the OPTIONS choice bottom right.

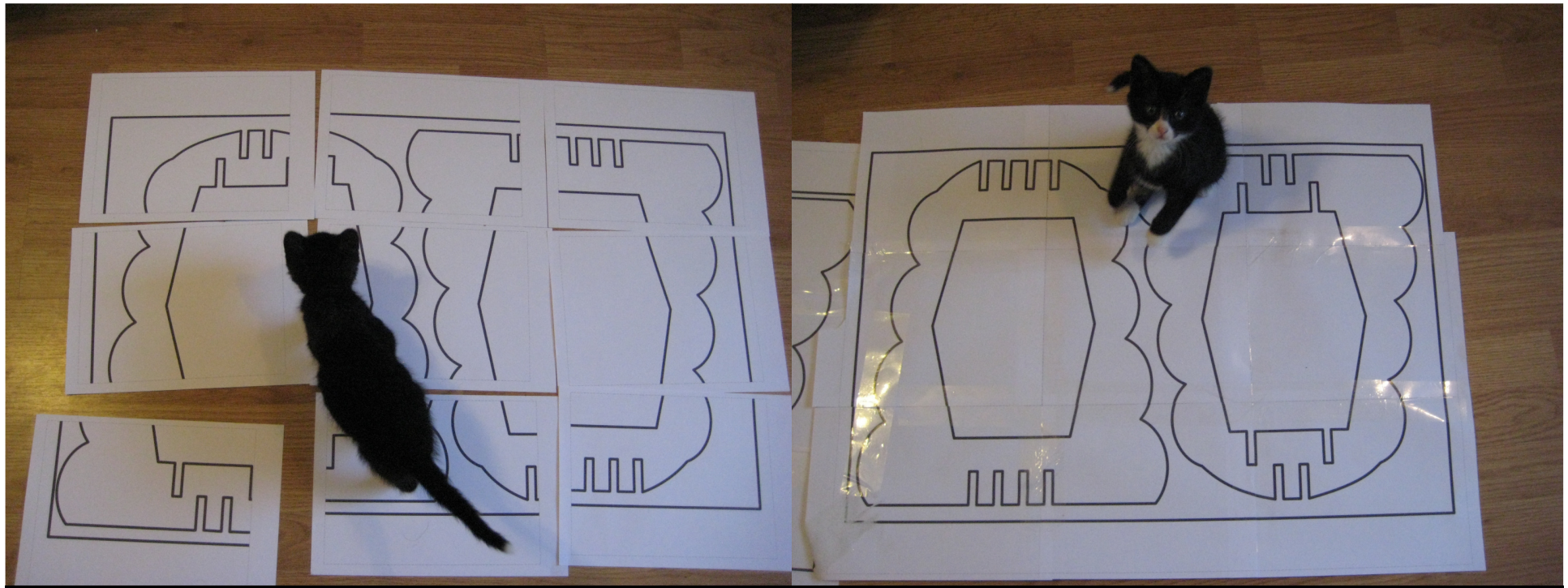
Another box will open, click on PRINTER PROPERTIES.



Depending on your printer and software, different screens may appear.

I looked for POSTER PRINTING.

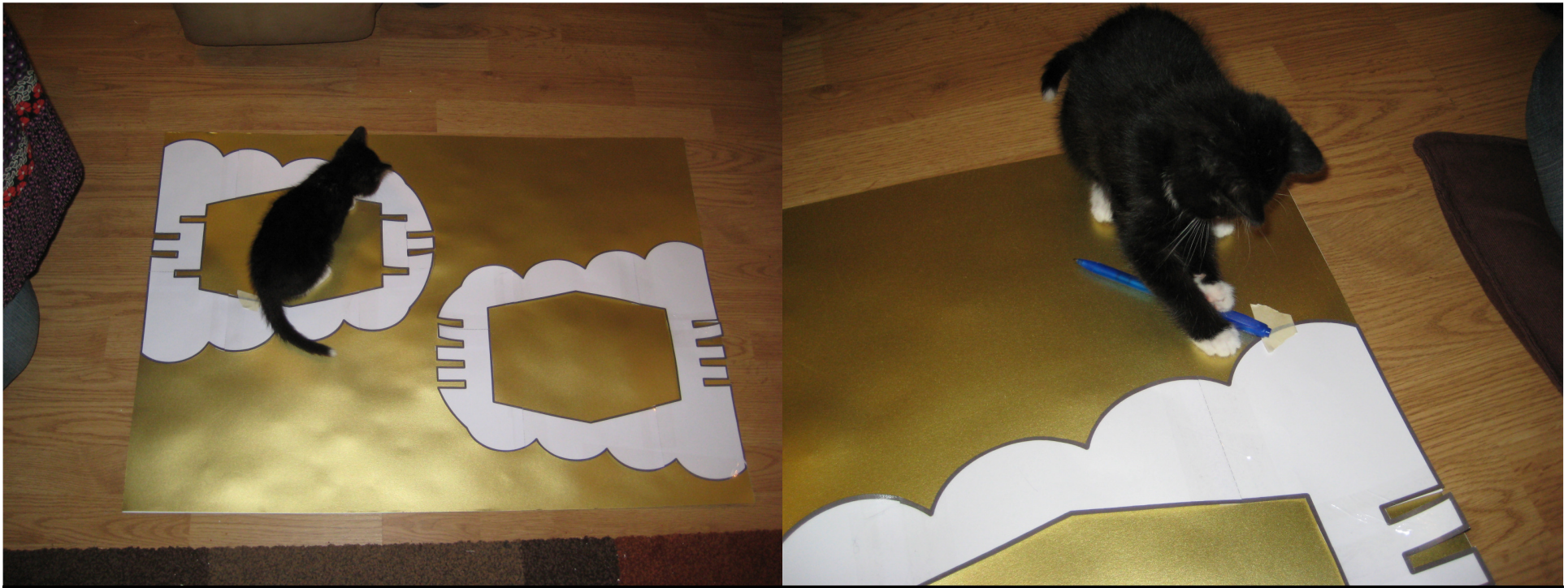
I selected FAST DRAFT 3X3 SHEETS LANDSCAPE and then clicked OK



When the 9 pages had printed (3x3) they all had a dashed line around the edge and a plain white border. I was able to trim these off and then join the pages together with tape to make one large template.

On my printer, I could choose as many as 5x5 pages (25) which would be HUGE, alternatively I have chosen A5 instead of A4 paper to make a SMALLER template.

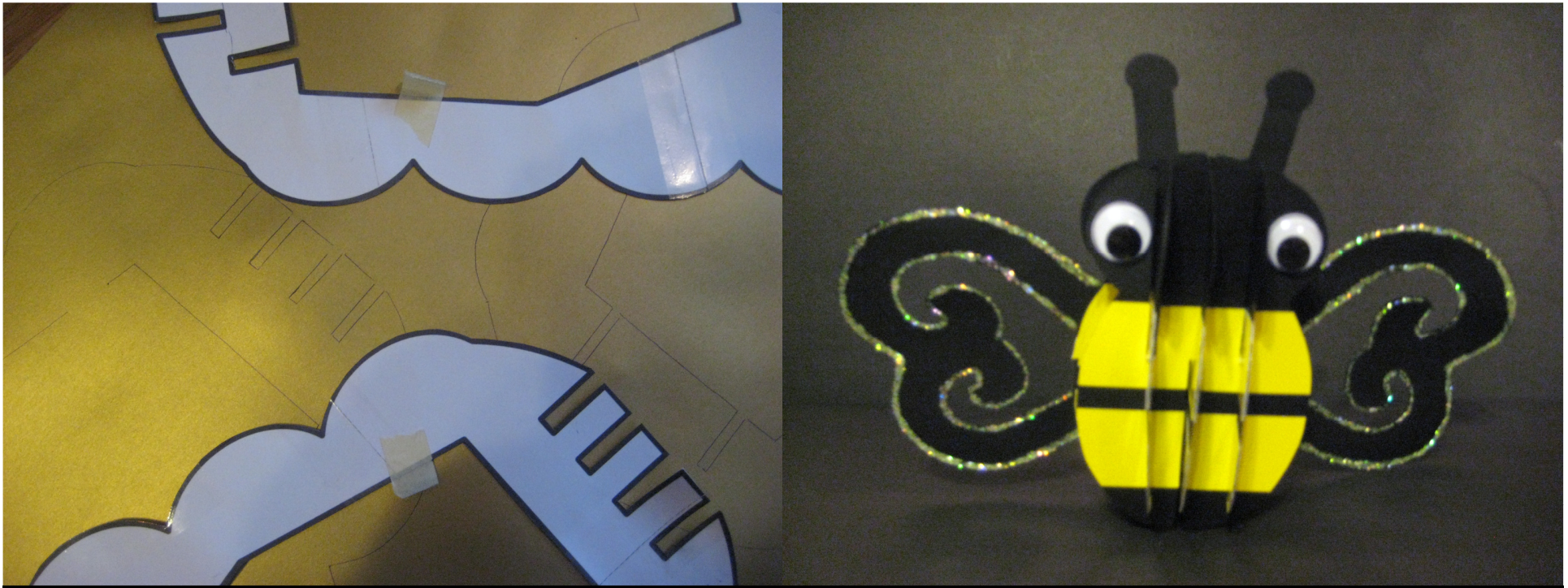
Here you can see Sox helping me stick the pages together!!



After they were stuck together, I cut out the design.

I then laid out the design on large sheets of double sided coloured card (I actually bought A2 sheets of card from a large store, and stuck two together to make it double sided. I attached the template with little bits of masking tape (or anything low tack).

I then draw around the template with a pen..... or tried to when Sox wasn't stealing my pen !!!



I was then able to remove the template and masking tape (ready to be used again if needed) and I was then able to cut the large design from my coloured card.

This particular design is for a beehive from by Third Selection CD (due to launch March 2010), and here is a sneak preview of the bee that goes with it.